

CHAMOT

Recombinant Human IGF-I

CM113-100HP

CM113-500HP

CM113-1000HP

CM113-5000HP

CM113-10000HP



CHAMOT

喬默生物技術(上海)有限公司
CHAMOT BIOTECHNOLOGY CO., LTD.

CONTENT

1 产品简介

2 产品组成

3 产品储存

4 产品使用

Recombinant Human IGF-I (Insulin-like growth factor-I)

编号:	CM113-100HP CM113-500HP CM113-1000HP CM113-5000HP CM113-10000HP	规格:	100 µg 500 µg 1 mg 5 mg 10 mg
类别:	重组蛋白	应用:	Functional Assay

产品简介

描述: Insulin-like growth factor 1 (IGF-1), also called somatomedin C, is a protein that in humans is encoded by the IGF1 gene. IGF-1 is a hormone similar in molecular structure to insulin. It plays an important role in childhood growth and continues to have anabolic effects in adults. A synthetic analog of IGF-1, mecasermin, is used for the treatment of growth failure.

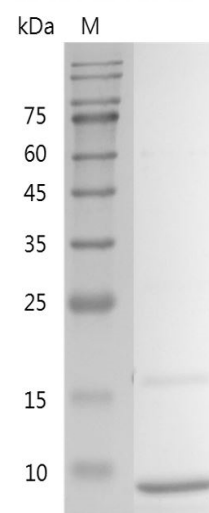
来源: *Escherichia coli*

纯度: >95% as determined by SDS-PAGE and SEC-HPLC.

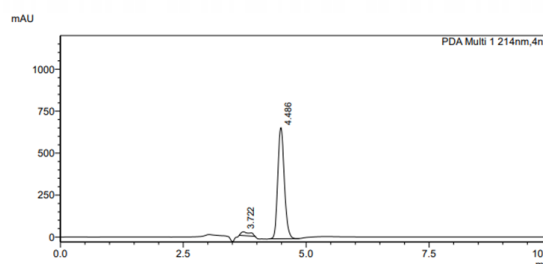
生物学活性: Measure by its ability to induce MCF-7 cells proliferation. The ED₅₀ for this effect is 0.9-3.1ng/mL. The specific activity of recombinant human IGF-I is approximately > 1.2 x 10³ IU/mg.

内毒素检测: < 0.01 EU per 1 µg of the protein by the LAL method.

蛋白序列: MGPETLCGAELVDALQFVCGDRGFYF
NKPTGYGSSRRAPQTGIVDECCFRS
CDLRRLEMYCAPLKPASAK with polyhistidine tag at the C-terminus



SDS-PAGE analysis of recombinant human IGF-I



The purity of recombinant human IGF-I is greater than 95% as determined by SEC-HPLC.

产品组成

成分: 从含有 1X PBS, pH 7.4 溶液中冻干的蛋白质。

产品储存/运输

产品形式	储存温度	储存时间
冻干粉	-20°C至-80°C	自收到之日起1年
重悬液 (初始)	2°C至8°C	不超过1周
重悬液 (经稀释)	-20°C至-80°C	3到6个月

运输方式： 蓝冰

产品使用

- 1、开盖前，建议3000-3500rpm离心5min。
- 2、推荐使用无菌水重悬冻干粉，溶液浓度不低于100 μ g/mL，不高于1mg/mL，并室温静置至少20min以充分溶解。勿涡旋剧烈振荡。
- 3、重悬后的溶液，2-8°C无菌保存不超过1周。
- 4、如需长期保存，推荐使用无菌的含载体蛋白（如0.1%BSA、10%FBS或5%HSA）的溶液进一步稀释（不低于10 μ g/mL）后分装保存，-20°C至-80°C无菌保存3到6个月。无血清实验需求时，可更换为5%海藻糖溶液作为载体。避免反复冻融。

WB= Western Blot; IP= Immunoprecipitation; IF= Immunofluorescence; IHC= Immunohistochemistry;
FACS= Fluorescence activated Cell Sorting; FA= Functional Assay